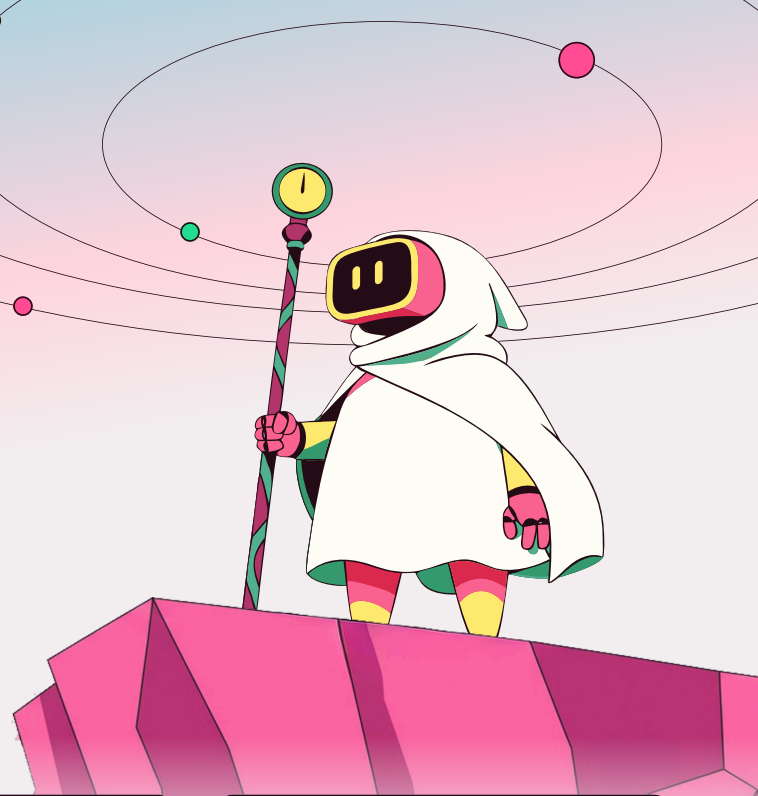




Agentic Exposure Management

Safety at Machine Speed



40K+

A record high number of CVEs found in 2025



5 Days

Average time for attackers to weaponize



65 Days

Current MTTR For Critical Vulnerabilities

AI is collapsing the timeline of cyberattacks, shrinking what once took days or weeks into minutes. Exploits are now weaponized and operationalized at unprecedented speed. Dux is redefining exposure management by combining deep asset intelligence with exploitability and mitigation analysis, enabling organizations to respond at attacker speed.



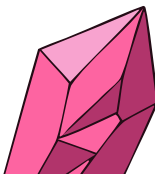
Asset Intelligence, at machine scale

Remove manual bottlenecks with AI agents that continuously understand what each asset is, how it's used, and who owns it.



Know what's exploitable, and how to stop it

Determine which vulnerabilities are exploitable in your environment, and the fastest actions to cut off risk before it's used against you.





Dux's agentless AI workers plug into existing tools and workflows to continuously analyze exposure the way a human analyst would - but at scale. They perform end-to-end research, from exploitability analysis to identifying the fastest mitigation actions.



Asset Management

- Seamlessly integrate data from all your security tools and sources
- Continuously monitor asset coverage and agent performance
- Track and manage security initiatives from creation to completion



Exploitability Analysis

- Exploitation prerequisites automatically generated for each CVE
- Evaluate exploitability using asset usage and control context
- Non-exploitable vulnerabilities eliminated from your backlog



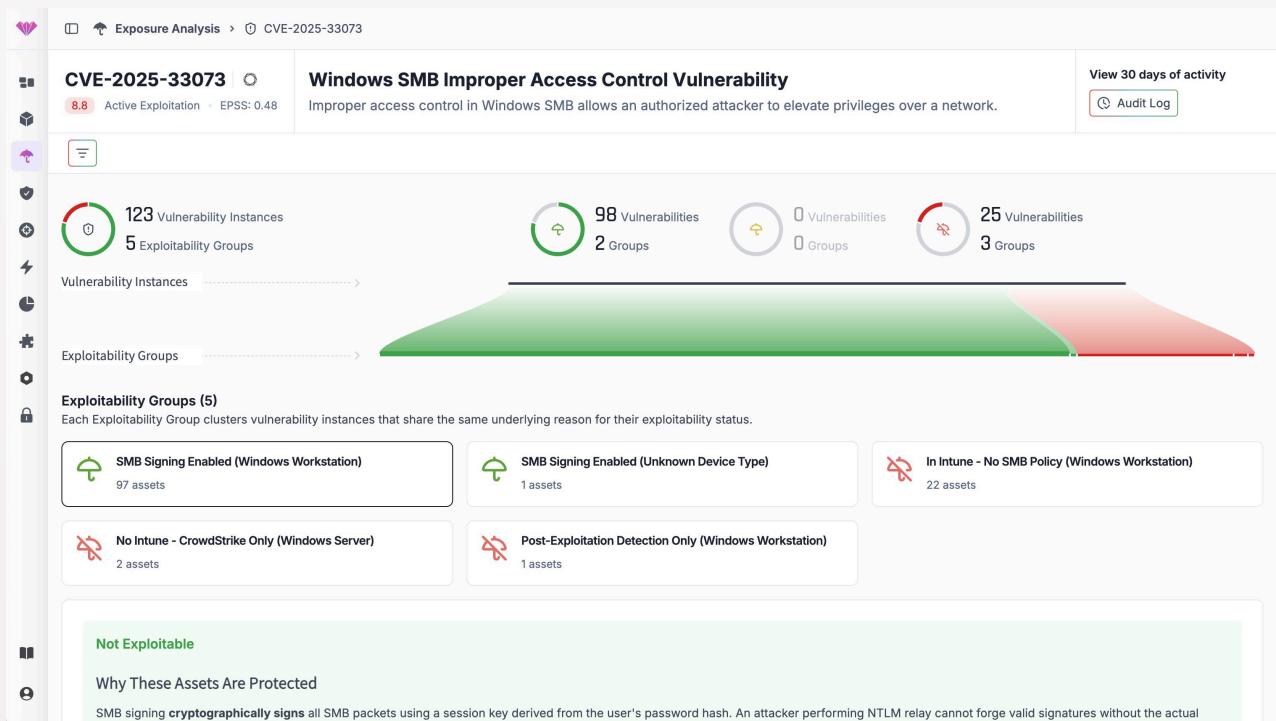
Lightweight Mitigations

- Identify control, configuration, or policy changes that can eliminate exposures
- Leverage existing security layers to reduce risk without waiting on patches
- Prioritize actions that deliver the fastest path to safety with minimal disruption



Remediation Acceleration

- Tickets, sign-in activity, user metadata and asset patterns are analyzed
- Asset owners identified without manual investigation
- Focuses remediation efforts based on impact, risk tolerance, and past outcomes



Any questions?
contact@dux.io